



Annual Report

2011-12



Jan Mitram Kalyan Samiti

Jan Mitram House, Past Kelo Vihar
Raigarh (Chhattisgarh)



Foreword

In these modern times, when Indians are moving ahead on a path of openness, competitiveness and growth; Skills, capital, and risk-bearing abilities are getting more and more crucial for survival. People, whether urban or rural, have to withstand this ever-increasing competition. In rural India, New challenges coupled with old constraints i.e lack of basic infrastructure, irrigation facilities, increasing cost of inputs and defragmenting land has threatened very sustenance. People have to comply with new technology, resource pooling, alternative marketing source etc to maintain their livelihoods strata or to enhance it. This is major concern for government and other developmental agencies.



Dr. Mukesh Goswami, President

JanMitram is doing its bit, to empower vulnerable Communities. This empowerment is in terms of skill, resource pooling and finance. Important thing is; these empowerments shall be irreversible and sustainable. In Last few years we have successfully created one institution RISA that is involved in marketing of rural and agriculture products. This year we have made our SHGs to form a cooperative that can help themselves with credit and technical support. This organization- **RAVIACCL, Rural and agriculture venture investment autonomous credit cooperative limited** is taking shape. This is getting overwhelming responses amongst people. In our regular projects, we have more energetically involved in development of village level institutions i.e. VPC in Wadi, WC in watershed and SHG federations. JanMitram shall focus on strengthening these institutions for the next few years to come.

Also, few other social concerns have occupied our mind. Child Sex Ratio in our district, have declined alarmingly, as evidenced in recent census data. We are about to launch a comprehensive awareness campaign, with focus on PC PNDT act.

This annual report presents details of our operations and achievements this year. All these take place successfully do to tireless efforts of my fellow volunteers and staff. I take this opportunity to thank them, and request to take it forward in forthcoming years.

Yours truly

Dr. Mukesh Goswami

OUR VISION & MISSION:

VISION

To intervene among backward and disadvantaged communities by rising awareness and skill for enabling them to recognize better opportunities offered by our great democratic nation.

MISSION:

- Improving health and educational status for women and children.
- Improving economic status of ST/SC and Marginal sections of society through employment generation, Skill development, and liaison for capital arrangement.
- To institutionalize services in unorganized sector and Introducing Proven technologies and ideas for better living.
- Conservation and management of natural resources through people's participation.
- Strengthening community organizations, local bodies, and Panchayati Raj Institutions for effective self-governance.
- Advocacy for Human rights and people's initiatives for social justice

Profile

Registered under **Societies Registration Act of Chhattisgarh 1973**,

Registration No. - 0838, Dated 31st October 2002

Registered under **FCRA**

Registration No. - 327510006 Nature: Cultural, Economical, Educational, Social

Registered under Section **12 'A' of Income Tax Act**

Registered under Section **80 G of income tax**

Our **PAN No** is - AAAAJ2306F

Area of operation - **Entire Bilaspur Division** of Chhattisgarh

Auditors :

- M/s Agrwal Dinesh and company, Chaitanya nagar Raigarh
- Sunil Kr. Agarawal, Opposite PNB, Raigarh



Annual Report 2011-12

Index		
SN	Details	Page
	SECTION-A , review of operations	Page No
1	Livelihood Enhancement Programme	
2	Skill Development initiatives	
3	Health programmes	
4	Scholarship for Ultra-poor	
5	Awareness Rising	
6	Development of institutions	
7	Other Programmes	
8	Section B: Board and Governance	
9	Section C: Financials and Audit Reports	

Expression of Gratitude

We in JanMitram, express our sincere thanks and gratitude to the members, donors, funding agencies, sympathizer and supporters who believed on JanMitram, supported and in moral and financial terms. We would especially like to mention

- National bank for agriculture and rural development – NABARD, Regional office Raipur and DDM Raigarh for their support for WADI and VDP
- National Aids Control organization (NACO) and State aids control society (CGSACS) for supporting TI programme. District health administration is also thanked for their kind support in implementation.
- GOI and GOCG for IWMP Watershed development programme and DRDA Raigarh for actual implementation. WE also thank watershed committees and People's representatives of Kharsia block for support in field.
- State bank of India , for extaining R-SETI training support to JanMitram institute for skills and development
- DRDA Raigarh for Sanjivani programme, which helped to rejuvenate over thousand SHGs in the district.
- Individual Donors who supported our organization from their hard earned money and gave us pleasure to bring smile on face of oppressed people.
- Media and Media person who, wholeheartedly circulated stories and achievement among their reader which actually made our task easier and improved organization's image in people' mind

JanMitram Famely





Review of Operations – 2010-11

1. LIVELIHOOD ENHANCEMENT PROGRAMMES

Livelihood enhancement remains core of our initiatives. Our mission clearly defines about technology dissemination, institutionalization of services, financial and market linkage etc as tools of poverty reduction. All such activities should be eco-friendly and have considerable emphasis over sustainable usage of Natural resources. This year, NABARD TDF-Wadi and Village development Programmes, Water shed programme GOI and Self funded livelihood support services went on to tackle poverty in target areas.

A. NABARD-TDF Wadi Programme

Indiscriminate exploitation of forest resources and poor crop and animal production practices have to low productivity and degradation of agricultural land and depletion of forest resources, the main support system of Tribal's. As a result of low income and shortage of food, majority of the tribal's migrate to nearby towns for sustenance

JanMitram is closely associated with NABARD which has assisted in implementation WADI projects in Gujarat and Maharashtra. In view of the success of the approach adopted under the 'WADI' model and its overall impact on poverty alleviation, NABARD has taken a major initiative to replicate the Gujarat wadi model in various states. JanMitram was chosen as partner and assistance is being provided for 200 tribal families. This new project is started in Gharghoda block of Raigarh district and Kicked off in late December 2010.



Major Delevarables of WADI Programthis year

- ✓ Established 200 acre Horticulture plantation
- ✓ Soil Conservation
- ✓ Water Resource Development
- ✓ Earning through intercrop
- ✓ Drudgery reduction
- ✓ Started income generation activity among women
- ✓ Training and Capacity Building

The core interventions of the programme is establishment of orchard of the selected fruit crops as a foundation economic activity and utilization of border for planting of multipurpose forestry plants to meet the fodder, firewood and timber requirements. This will reduce their dependency on forests providing them sustainable

livelihood. These orchards have been developed in wastelands thus increasing net cropped area. This year 200 Acre of plantations were carried out. Our experts and staff continued with technical support and guidance for development of quality orchard.

Water resources have been developed in each orchard, through which farmers have been now able to do intercrop with different vegetables. Social mobilization and empowerment initiatives are also part of project. 4 VPCs, 3 farmers clubs and 32 women SHGs have also been developed under this programme.



B. Village Development Programme -VDP

A Majority of villages in the country still face Constraints such as access to education, health facilities, Drinking water, Power Roads, Credit, information and market. Against this background, adoption of such villages in backward region for development and integrated village development our strategy. With prime support of NABARD, and convergence of various line department funds, village development programme is initiated in 4 villages of gharghoda block. These are tribal dominated Tenda, Dangninar, BastiPali and BaronaKunda villages and lack civic facilities. Last year, we developed a details plan of village development plan is to focus on financial inclusion and also to develop village with holistic approach. With help of this programme Few major achievements come by this year given below.

- **Initial Sensitization of VDP** :Being the first year of VDP, Peoples orientation and sensitization toward development activities, programme goals and methods, various elements of programme were discussed in detail. First sensitization was done in first quarter. Later stages, sensitization camps were done with VPC committee, especially regarding convergence, there need and rising demands with authorities.
- **Village level Sensitization workshops**: Such one workshop in each VDP village was organized, where annual action plan, based on PRA was discussed. Responsibilities of people of fixed, and the team emerged was constituted as VPC. The committee formed is now a solid institution and people's forum for discussing developmental issues and approach to entitlements. Some issues, which have long become obstacle in development i.e. encroachment on road/Community land, direction of drain etc were sorted on spot and made a constructive atmosphere.
- **Exposure visit for farmers / other participants**: Exposure visit was organized for farmers, in which 40 farmers visited Jashpur district to see village development and improved agriculture practices, Made by Raigarh Sahyog samiti. This visit refreshed farmers approach and made them enthusiastic towards modern agronomic practices, farm equipment bank and backyard vegetable cropping etc.
- **Workshop on modern agriculture practice/ SRI, aromatic cultivation**: Training for Modern agronomic practices regarding seed intensification in rice, vermin-compost and Nadep composting, cultivation of Maize and pulses in upland, vegetable production were organized in villages. This has brought about 50 acre of land under SRI. also, over 22 acre of land (cumulative by 112 Farmers) brought under vegetable cultivation. over 60 farmers stated growing maize and pulses in upland, which was not seen earlier. About 150 Farmers have stated vermin-composting in their farms.
- **Promotion of vegetable cultivation**: Over 22 acre of land (cumulative by 112 Farmers) brought under vegetable cultivation.
- **Meeting with VDC, Agri Dept./ KVKs** : These meetings were organized to provide knowhow of modern technology, tools, seeds, facilities and subsidies from these department. This helped in convergence of different schemes in villages. It also helps these departments a lot as they choose VDP village as there model for this and forthcoming years, where they effortlessly do extension and demonstration of schemes and modern varieties.



Mr. OP Rathya, Parliamentary Secretary GOCG attending Convergence Program

On 4th January, 2012 Parliamentary Secretary GOCG and local MLA Mr. O.P. Rathiya presided convergence drive and distributed subsidized vemi kits, seeds and other farm inputs in tenda village.



C. IWMP Watershed Development Project.

This year, we have started watershed development programme in 20 villages of Kharsia block. This programme is intended to reduce soil erosion and improve water availability in these villages. We submitted a Preliminary project report last year, which got approved by GOI-DOLR and JanMitram, was approved as a PIA



This year, Preparation of DPR went on. Watershed committees were formed in all 20 villages of project area. Preliminary training and orientations, followed by Participatory rural appraisal paved way for a detailed project report. Watershed structure was finalized and geo-satellite coordinates of each work documented. Overall 4605 Hact area shall be treated while 3000 families shall be benefitted with program. Various livelihood and microenterprise development activities are listed with probable beneficiaries.

We also initiated entry point activities in few villages. Mostly water retaining works like small tank, hand pumps, and wells are created under this head. We are in wake of fully fledged implementation for FY 2012-13.

Skill development Initiatives

Acquiring and developing the skills that provided employment is need of hour, especially for rural youth. JanMitram undertakes different skill development for the school drop-outs and existing workers especially in the informal sector. This is done in close consultation with industry, micro enterprises in the informal sector, experts and academia.

last year We started JISAD- JanMitram Institute for skill development. The JISAD provides Carrier Counseling, Vocational Trainings and skill development services, with a motto of ***“Guiding youth, Spurring smiles”***.

The JISAD is now entrusted to conduct all skill development and vocation trainings of JanMitram. This year JISAD conducted many in house and External Training this year. One mobile equipments maintance training was organized with support of SBI R Seti.





Sanjivani Programme: JanMitram is involved in development of SHGs since inception. Apart from capacity building, we also link them with commercial banks for capital support. A fairly large number of groups are involved in seasonal activities and lending from bank before onset of business season is crucial. Regretfully, many SHG are unable to avail loan on time, due to time taking process of bank. Hence the livelihood support services have been started by organization, in which a sum is provided for the time being, that is returned once bank loan is disbursed. This provides a cushion to SHG. This year, 18 SHGs were supported by organization with a sum over 5 Lakh.

Health

Addressing Community health issues, especially those of children and women are also in core of our mission. We are running mitanin programme since 2003 and targeted interventions for AIDS-STI prevention amongst female sex workers in Raigarh district. Progress of this year is discussed in this section.

Aids TI Programme

Raigarh is ecologically vulnerable to HIV/AIDS. 139 people already detected HIV positive in last few years. Due to rapid growth of Industries & mining, human mobilization is being increased at an alarming state. Human trafficking is one of the major factors that made this district prone to this deadly disease.

Keeping in view, We had been working to the issue independently. After field survey alarming reports were came to front. Around 18401 people were found vulnerable who were likely



to be affected by HIV. The organization immediately acted upon. Volunteers started counseling among Female Sex Worker, in Different Hotspots of Raigarh and kharsia. In the year 2008, CG-SACS (Chhattisgarh AIDS Control society) made us project implementing partner. The programme is a part of NACP under guidance and fund of NACO. The project is meant for **Targeted Intervention (TI)** in HIV/AIDS.

A team of 6 members, with 8 community facilitators (peer educator, henceforth term as PE) comprises of technical & non-technical experts solely held responsible to carry out the predefined activities in TI programme. The project is based in city and suburbs of Kharsia & Raigarh. Major activities like awareness campaigns, technical Trainings & Health camps were convened during the project period. Besides these several other activities were also conducted among stake holders, by engaging technical experts like Doctors, paramedical staffs, ANM workers, ORW workers etc who imparted training on STI/RTI management, safe sex practice (BBC), First Presumptive treatment, Second Presumptive Treatment, Syphilis Screening, Drug Procurement etc.

Volunteers involved themselves in Free Condom Distribution, Social Marketing of Condom, Condom demo and re-demo, Establishment of condom outlet. 24 Condom outlets were set up, 236027 Condoms



distributed & 2844 stakeholders trained with Condom Demo & Re-Demo. 436 persons were referred to different ICTC centers by the Volunteers. Despite numerous challenges, the team of TI has accomplished its goal. The overall achievement report envisages the figures as follows:

S.N.	Component	Activity	Annual Target	Achievement
1	B.C.C.	One to One by PE	9600	9465
		One to one by orw	1200	1914
		One to group discussion	384	340
		Condom demo	2000	1735
		Condom Redemo	2000	3545
		Counseling	720	665
		Wall painting	15	15
		Reporting and documentation	Regular	Yes
2	STI Management	Identification of preferred STI service provider	8	8
		Treatment of STI symptomatic cases	200	134
		Follow-up	200	112
		First Presumptive treatment	400	367
		Second Presumptive Treatment	200	112
		Regular Medical Checkup	2000	600
		Syphilis Screening	1000	636
		Drug Procurement		15816
		Counseling		665
		Meeting of STI Committee	12	12
		Formation of STI groups at all intervention sites	8	8
		Reporting and documentation	Regular	Yes
3	Condom Programming	Condom Distribution	258866	236027
		Free Distribution	187755	236027
		Condom demo and re-demo	23469	2844
		Establishment of condom outlet	20	24
		Reporting and documentation	Regular	Yes
4	Community Mobilization	Meeting at Hotspot level	96	89
		Community Events	Minimum two	4
		Meeting at DIC level	24	24
		Reporting and documentation	Regular	Yes



JanMitram Scholarship for ultra poor

JanMitram is running variety of programme in field. Each and every member and volunteer of JanMitram feels empathy with poor and deprived people. Our primary focus is combating poverty; however, it is sometimes necessary to help people in those areas which are not out primary focus. Education is foundation of a successful life. We have seen many youth and girls dropping out of education due to financial constraints. Therefore, the managing board decided to establish a fund for providing scholarship to student belonging ultra poor families.

Four categories of scholarship were decided. For Boy's higher and professional education i.e. MBA, BE, Medical etc, The S.P.Singh Memorial scholarship is started.

This year, Three students Shri Sujit Patre Received Rs 58000 , Mr Arun Padna Rs 10,000 and Tneswar Dewangan Received Rs 5000 Support. First two are doing BE while Mr Dewangan was supported in school education. Total Rs 73000 Was assisted this year for scholarship purpose,

Part B : Internal Governance



JANMITRAM BOARD:

JanMitram Board is made up of 7 persons who are responsible for:

- Taking policy decisions.
- Monitoring overall programme of the organization.
- Guiding the President and Division heads, whenever required, on policy and operational matters.

PRESIDENT - CORE GROUP - FUND RAISING GROUP CONTINUUM

President of JanMitram is chairperson of both JanMitram Core Group and JanMitram Fundraising Group. He along with core group will be responsible for:

- Lead the organization,
- Give direction,
- Monitor all activities,
- Initiate new actions according to the need of the hour, Improving upon the existing system and procedures and
- Effective implementation of all welfare activities with quality.

The fundraising group is engaged in raising attached and unattached funds for programme and activities. They are responsible for carrying out the day-to-day activities of raising funds. All these activities are convening by secretary and president. Treasurer looks after financial administration and legal formalities and accounts related help from the people with line functionaries.

Prabndh-karini (JanMitram Governing Board) is elected in democratic way. Composition of Present Governing is



Dr. M.G. Goswami, President



Sh. Santosh Pandey
Vice-President



Shri Manish Singh, Secretary



Sh. Ravi Kant Meena
Treasurer



Sh. Bharthari Jaisawal
Joint Secretary



Sh. Jivan Bhagat
Member of Executive Council



Smt Sevti Gupta
Member of Executive Council

s.n.	Name	Occupation	Position	Address
1	DR. M.G. GOSWAMI	Consultant	PRESIDENT	Raigarh
2	MR. SANTOSH PANDEY	Social worker	VICE PRESIDENT	Raigarh
3	MR. MANISH SINGH	Business	SECRETARY	Raigarh
4	MR. BHARTHARI JAISWAL	Social worker	JOINT SECRETARY	Sarangrh
5	MR. RAVI KANT MEENA	Service	TREASURER	Lailunga
6	MR. JIVAN BHAGAT	Service	MEMBER OF EXECUTIVE COUNCIL	Ghaeghoda
7	SMT. SEVATI GUPTA	Service	MEMBER OF EXECUTIVE COUNCIL	Lailunga

Tanure of board is 3 years; however annual approval of general council is taken. None of Board members are related with blood or marriage. Board Meeting Details of this year are given below.

Type of Meeting	Prescribed frequency	No of Meetings held in the year
Managing Board Meeting	Minimum one in every Quarter	4
Sadharan Sabah (General Body)	Annual	1
Idea Lab	Joint Meetings of Senior Staff and Board , Monthly or - as and when required	12

I

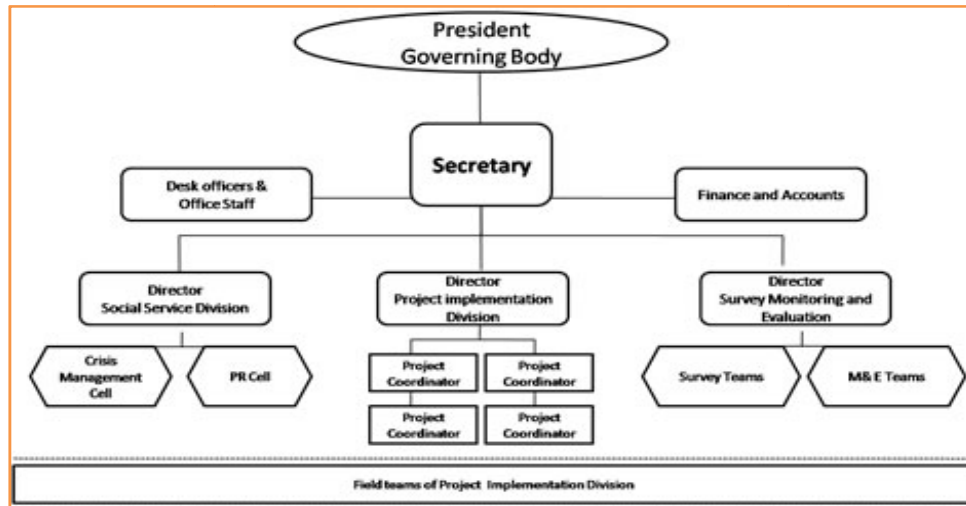
Internal audit and financial management



The internal audit team is made up of two persons, who work independently, though in close coordination with core group to monitor all transactions in the organization.

They visit projects/units regularly and submit monthly reports to the core-group. In the case of serious mistakes the president sends out instructions to concerned persons, otherwise the project heads takes remedial actions on the basis of the findings of internal auditors. All bank accounts of organization follow joint signatory method.

Orgnaogram



LIST OF PROMINENT STAFF AND TEAM MEMBERS

- Mr. Ramkanta Padhi : Sr. Programme officer
- Mr. Pradeep Dansen: Sr. Coordinator
- Mr. Shailesh Aditya: Sr. Coordinator
- Mr. Ashwini Chouhan: Sr. Coordinator
- Mr. Prveen Gupta: Sr. Coordinator
- Ms. Punam Behra : Asst. Coordinantor
- Mr. Jalandhar Gupta: Account superitandant
- Smt. Kusum Sahu : Asst. Coordinator
- Mr. Nitesh Sahu: MIS Assistant
- Mr. Sukh singh Rathiya : Asst Coordinator
- Mr. Arunoday Mishra: Asst. Coordinator
- Ms. Kajni Khute: Asst Accountant
- Mr. Manoj Sharam: Asst Accountant
- Mr. Pulastak Dewangan: Office assitant
- Mr. Mohan Gangwal : Office Assitant
- Mr Harmohan Padhi: Asst. Coordinator



Supported by Field animators and Volunteers

Compensation Structure			
Compensation band (PM)	M	F	Total
• 5000 or less	21	9	30
• 5001-10000	8	0	8
• 10001-25000	9	0	9
• 25001-More	0	0	0



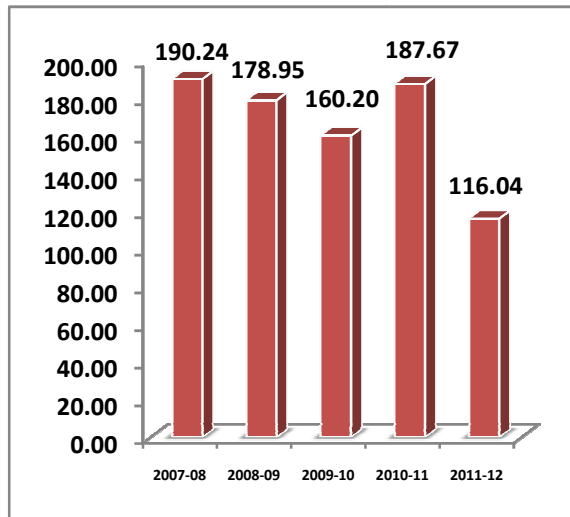
Part C : Sources of Funds and Audit Report

JanMitram is getting support from various corners for its social and development related activities. We work with various government and non-government institutions. Individual support in form of donations is also a source. Consultancy and support to various schemes is another activity that adds to our financial resources. Our major financial supporters are:

- National bank for Agriculture and Rural Development
- C.G. State AIDS Control society
- DRDA / ZP Raigarh
- Other Sources:

Employment department, Other NGOs, individual donations, member's contribution, and membership fee etc. beneficiary contribution, Bank interest etc,

Receipts and expenditure for last 5 years



*Amt in Lakh INR

Though JanMitram is allowed to get foreign contributions under FCRA by MHA-GOI, its funding sources are indigenous. Donations to organization are exempted for tax U/S 12-A and 80-G of income tax Act.

- Its Annual Reports and Audited Statements are freely available to any member of the public and disclosed on its website www.janmitram.in .

Audit Report: Attached

Transparency disclosures

- No remuneration, sitting fees or any other form of compensation is paid to board members for this capacity.
- Total cost of National travel for organizational purpose incurred by JanMitram Staff is Rs 17592 This year.
- No international travel has been made or booked in accounts this year.

DECLARATIONS

- JanMitram Complies with statutory requirements of income tax act 1961
- JanMitram Complies with statutory requirements of Foreign contribution regulation act 1976
- JanMitram Complies with Societies registration act of CG-1973
- JanMitram Complies with all donor requirements



AGRAWAL DINESH & CO.
CHARTERED ACCOUNTANTS

30-31, 1st Floor
 Krishna Crown, Chaitanya Nagar,
 Dhimrapur Road, Raigarh (C.G.)
 Ph. (07762) 234401/02

AUDIT REPORT

To,
 The Managing Committee
 Janmitram Kalyan Samiti,
 At. P.O- Raigarh,
 Distt. Raigarh (C.G.)

We have examined the attached Statement of Affairs of **Janmitram Kalyan Samiti, Distt - Raigarh** as at 31st March 2012 the Income & Expenditure and Receipts & Payments Account for the year ended on 31 March 2012 annexed there to and report that:

1. We have obtained all information and explanation which to the best of our knowledge and belief were necessary for the purpose of our audit.

2. (i) These financial statements are the responsibilities of the Samiti Management. Our responsibilities is to express an opinion on these financial statements based on our audit.

2. (ii) We conducted our audit in accordance with auditing standards generally accepted in India. Those standards required that we plan & Perform for the audit to obtain reasonable assurance about whether the financial statements are free of material misstatement. an audit includes examining on test basis. Evidence supporting the amounts and disclosures in the financial statements . An audit includes assessing the principles used and significant estimates made by the management as well as evaluating the over all financial statement presentation . We believe that our audit provides reasonable basis of our opinion .

3 In our opinion proper books of accounts, as required by law have been kept by the samiti so far as appears from our examination of the books .

4 The Receipts & Payments account dealt with by these report are in agreement with the books of accounts.

In our opinion and to the best of our information and according to the explanation given to us , the said accounts together with the notes thereon , with the information required in the manner so required and give a true and fair view.

i. In the case of statements of affairs ,of the state of affairs of the samiti as at 31st march 2012.

ii. In the case of Income and Expenditure Account, of the Surplus of the Samiti for the year ended on that date.

Place: Raigarh.

Date : 26/09/2012

For, Agrawal Dinesh & Co.
 Chartered Accountants

(D.K. Agrawal)

Partner

M.No. 076969





ANNEXURE

Statement of particulars

I. APPLICATION OF INCOME FOR CHARITABLE OF RELIGIOUS PURPOSES

- | | | |
|----|--|---|
| 01 | Amount of income of the previous year applied to charitable or religious purposes in India during that year | 9720236/- income during the year and Rupees 9445286/- expenditure . |
| 02 | Whether the trust has exercised the opinion under clause (2) of the explanation to section 11(1) ? If so, the details of the amount of income deemed to have been applied to charitable or religious purposes in india during the previous year. | -----NIL ----- |
| 03 | Amount of income accumulated or set a part/finally set apart for application to charitable or religious purposes, to the extent it does not exceed 15% of the income derived from property held under trust wholly/in part only for such purposes. | 274950 /- |
| 04 | Amount of income eligible for exemption under section 11(1) © give details). | 274950 /- |
| 05 | Amt.of income, in addition to the Amt referred to in item 3 above, accum. or set apart for specified purposes U/S 11(2). | -----NIL ----- |
| 06 | Whether the amount of income mentioned in item 5 above has been invested or deposited in the manner laid down in section 11(2) ((b) ? If so, the details thereof. | -----NIL ----- |
| 07 | Whether any part of the income in respect of which an option was exercised under clause (2) of the explanation 11(1) in any earlier year is deemed to be income of the previous year under section 11(1)(b)? If so, the details thereof. | ----- NO ----- |
| 08 | Whether during the previous year, any part of income accumulated or set apart for specified purpose under section 11(2) in any earlier year. | ----- No. ----- |
| | (a). Has been applied for purpose other than charitable or religious purpose or has ceased to be accumulated or set apart for application there to, or | ----- No. ----- |
| | (b). Has ceased to remain invested in any security referred to in section 11(2) (b) (i) or deposited in any account referred to in section 11(2) (b) (ii) or section 11((2) (b) (iii), or | ----- N.A. ----- |
| | (c). Has not been utilised for purposes for which it was accumulated or set apart during the period for which it was to be accumulated or set apart or in the year immediately following the expiry thereof ? if so the details thereof. | ----- N.A. ----- |

II. APPLICATION OR USE OF INCOME OR PROPERTY FOR THE BENEFIT OF PERSONS REFERRED TO IN SECTION 13 (3)

- | | | |
|-----|---|----------------|
| 01. | Whether any part of the income or property of the trust was lent, or continuous to be lent, in the previous year to any person referred to in section 13(3) (hereinafter referred to in this annexure as such person)? If so, give details of the amount, rate of interest charged and the nature of security, if any | ----- NO ----- |
| 02. | Whether any land, building or other property of the trust was made, or continued to be made, available for the use of any such person during the previous year? If so, give details of the property and the amount of rent or compensation charged, If any | ----- NO ----- |
| 03. | Whether any payment was made to any such person during | ----- NO ----- |





the previous year by way of salary, allowable or otherwise If so, give details.

04. Whether the service of the trust were made available to any such person during the previous year? If so, give details thereof together with remuneration or compensation received, If any ----- NO -----
05. Whether any share, security or other property was purchased by or on behalf of the trust during the previous year from any such person? If so, give details thereof together with the consideration paid. ----- NO -----
06. Whether any share, security or other property was sold by or on behalf of the trust during the previous year to any such person? If so, give details thereof together with the consideration received. ----- NO -----
07. Whether any income or property of the trust was diverted during the previous year in favour of any such person? If so, give details thereof together with the amount of income or value of property so diverted. ----- NO -----
08. Whether the income or property of the trust was used or applied during the previous year for the benefit of any such person in any other manner? If so, give details ----- NO -----

III INVESTMENT HELD AT ANY TIME DURING THE PREVIOUS YEAR(S) IN CONCERN IN WHICH PERSONS REFERRED TO IN SECTION 13(3) HAVE A SUBSTANTIAL INTEREST

Sl. No.	Name and address of the concern	Where the concern is a company, number and class of shares held	Nominal value of the investment	Income from the investment	Whether the amount in col.4 exceeded 5% of the concern during the previous year say, Yes/No.
1	2	3	4	5	6
			Nil	Nil	Nil
			Nil	Nil	Nil

Place : Raigarh
Date : 26/09/2012

For, Agrawal Dinesh & Co.
Chartered Accountants

(D.K. Agrawal)





JANMITRAM KALYAN SAMITI
At/P.O.-RAIGARH, DISTT.-RAIGARH
INCOME & EXPENDITURE ACCOUNT
FOR THE PERIOD FROM 1ST APRIL 2011 TO 31ST MARCH 2012

EXPENDITURE	AMOUNT	INCOME	AMOUNT
<u>To Fund Transfer</u>		<u>By Grant In Aid</u>	
As per Schedule "B"	7945624.00	DRDA Raigarh (SGSY Part-III)	1097200.00
		C.G. State AIDS Control Society	783387.00
<u>To NGO Contribution</u>		DRDA IWMP-9 Singhanpur	2950000.00
As per Schedule "C"	129983.00	PNDT Government of India	600000.00
		ICDS Gharghoda for Lac Handicraft	48467.00
To Grant in Aid Return to SMPB Raipur	12000.00	NABARD Raipur for VDP Programme	123834.00
To Pussore Flood Relief	181432.00	NABARD Raipur for RIF Project	108903.00
To Awareness Camp	70598.00	RSETI for Mobile Repairing Training	44000.00
To RSETI Mobile Repairing Training Exp.	44000.00	NABARD WADI TDF Programme	1908600.00
To Training Support to Ravi Co-operative	203941.00		
To Ultra Povers Scholarship	73000.00	<u>By Contribution/Donation</u>	
To Planning Exp.(BRGF)	75000.00	Membership Fees	9600.00
To ICDS for Lac Handicraft Exp.	48467.00	Community Donation	1626000.00
To Staff Orientation Training	258410.00		1635600.00
To Publicity & Media	50000.00	<u>By Consultancy Income</u>	
To Administrative Expenses	162655.00	BRGF Planning	303500.00
To Bank Charges	1274.00	Basix Consulting Pvt. Ltd.	100000.00
To Interest Paid UBI A/c - 664/04	23452.00		403500.00
To Software Purchase	165450.00	<u>By Interest Received from Bank</u>	16745.00
<u>To Income & Exp. A/c</u>			
Excess of Income Over Exp.	274930.00		
Transfer to Balance Sheet			
TOTAL	9720236.00	TOTAL	9720236.00

In terms of our annexed report of even date

Place : Raigarh
Date : 26/09/2012

For, Janmitram Kalyan Samiti
Raigarh

(President)

For, Agrawal Dinesh & Co.
Chartered Accountants

(D.K. Agrawal)
Partner
Mem. No 076969





JANMITRAM KALYAN SAMITI
 AL/P.O.-RAIGARH, DISTT.-RAIGARH
RECEIPTS & PAYMENTS ACCOUNT
 FOR THE PERIOD FROM 1ST APRIL 2011 TO 31ST MARCH 2012

RECEIPTS	AMOUNT	PAYMENTS	AMOUNT
<u>To Opening Balance</u>		By <u>Fund Transfer</u>	
Cash in hand	6590.44	As per Schedule "B"	7945624.00
<u>Balance with</u>		By <u>NGO Contribution</u>	
Bank Of Baroda , Raigarh	203739.00	As per Schedule "C"	129983.00
CGGB , Raigarh	3632.00		
CGGB , Lailunga	137897.00	By Grant in Aid Return to SMPB Raipur	12000.00
SBI Gharghoda	17677.35	By Pussore Flood Relief	181432.00
UBI Capart A/c	277848.00	By Awareness Camp	70598.00
NABARD BOND (3 Nos.)	24750.00	By RSETI Mobile Repairing Training Exp.	44000.00
FDR With UBI	34007.00	By Training Support to Ravi Co-operative	203941.00
	706140.79	By Ultra Povers Scholarship	73000.00
<u>To Grant In Aid</u>		By Planning Exp.(BRGF)	75000.00
As per Schedule "A"	7664391.00	By ICDS for Lac Handicraft Exp.	48467.00
<u>To Contribution/Donation</u>		By Staff Orientation Training	258410.00
Membership Fees	9600.00	By Publicity & Media	50000.00
Community Donation	1626000.00	By Administrative Expenses	162655.00
	1635600.00	By Bank Charges	1274.00
<u>To Loan & Advances</u>		By Interest Paid UBI A/c - 664/04	23452.00
Janmitram Livelihood Support Service	866500.00	By Software Purchase	165450.00
Raigarh Integrated shellac Association	200000.00		
RIF Programme	109302.00	By <u>Loan & Advance</u>	
NABARD WADI TDF Pro.	2000.00	VDP Programme	31834.00
	1177802.00	UBI Loan A/c	780639.00
<u>To Consultancy Income</u>		By <u>Closing Balance</u>	
BRGF Planning	303500.00	Cash in hand	8558.44
Basix Consulting Pvt. Ltd.	100000.00	<u>Balance with</u>	
	403500.00	Bank Of Baroda , Raigarh	1073168.00
<u>To Interest Received from Bank</u>		CGGB , Raigarh	3565.00
	16745.00	CGGB , Lailunga	11890.00
		SBI Gharghoda	4277.35
		FDR With Ravi Co-operativ	30000.00
		Ravi Co- Operative	190211.00
		NABARD BOND (3 Nos.)	24750.00
			1346419.79
Total	11604178.79	Total	11604178.79

In terms of our annexed report of even date

Place : Raigarh
Date : 26/09/2012

For, Janmitram Kalyan Samiti
At/ Po-Raigarh, Distt. Raigarh

(President)

For, Agrawal Dinesh & Co.
Chartered Accountants

(D.K. Agrawal)
Partner

Mem. No 076969





JANMITRAM KALYAN SAMITI
At/P.O.-RAIGARH, DISTT.-RAIGARH
FOR THE PERIOD FROM 1ST APRIL 2011 TO 31ST MARCH 2012

Schedules to Receipt & Payments

As per Schedule "A"

Grant In Aid

DRDA Raigarh (SGSY Part-III)	1097200.00	
C.G. State AIDS Control Society	783387.00	
DRDA IWMP-9 Singhanpur	2950000.00	
NABARD Raipur for RIF Project	108903.00	
PNDT Government of India	600000.00	
NABARD Raipur for VDP Programme	123834.00	
NABARD WADI TDF Programme	1908600.00	
ICDS Gharghoda for Lac Handicraft	48467.00	
RSETI for Mobile Repairing Training	44000.00	7664391.00

As per Schedule "B"

Fund Transferred

AIDS TI on FSW Project	783387.00	
NABARD WADI TDF Programme	1908600.00	
IWMP-9 Singhanpur	2950000.00	
RIF Programme	108903.00	
NABARD VDP Training	173834.00	
SGSY SHG Training (Part III)	2020900.00	7945624.00

As per Schedule "C"

Organisation Contribution

SGSY SHG Training	29584.00	
Ravi Co-operative	100000.00	
RIF Programme	399.00	129983.00

In terms of our annexed report of even date

Place : Raigarh
Date : 26/09/2012

For, Janmitram Kalyan Samiti
At/ Po-Raigarh, Distt. Raigarh

(President)

For, Agrawal Dinesh & Co.
Chartered Accountants

(D.K. Agrawal)
Partner

Mem. No 076969





JANMITRAM KALYAN SAMITI

At./P.O.-RAIGARH, DISTT.-RAIGARH

BALANCE SHEET

AS AT 31ST MARCH 2012

LIABILITIES	AMOUNT	ASSETS	AMOUNT
<u>Income & Expenditure A/c</u>		<u>Fixed Assets</u>	
Opening Balance	5999681.79	Construction of Training Centre	4402612.00
Add : Excess of Income over Exp.			
Trans. From Income & Exp. A/c	274950.00	<u>Loan & Advance</u>	
	6274631.79	VDP Programme	31834.00
		Raigarh Integrated shellac Associati	400000.00
		SHPI Programme	93766.00
			525600.00
		<u>Closing Balance</u>	
		Cash in hand	8558.44
		<u>Balance with</u>	
		Bank Of Baroda , Raigarh	1073168.00
		CGGB , Raigarh	3565.00
		CGGB , Lailunga	11890.00
		SBI Ghughoda	4277.35
		FDR With Ravi Co-operative	30000.00
		Ravi Co-Operative	190211.00
		NABARD BOND (3 Nos.)	24750.00
			1346419.79
TOTAL	6274631.79	TOTAL	6274631.79

Accounting Policies and notes to the Accounts

- 1 Cash system of Accounting has been followed by the samiti.
- 2 Separate set of books of Accounts has been maintained for the SGSY SHG Training Programme ,Watershed , AIDS TL IWMP-9 Singhanpur, NABARD Wadi TDF Programme.
- 3 Samiti Transfer Amount to Project Account from Time to Time which is shown as expenditure made by the samiti.
- 4 Works done by the Samiti on various project are subject to our physical verification.
- 4 Cash balance stated in the financial statements are subject to our Physical Verification.

In Terms of our Annexed Report of Even Date

Place : Raigarh
Date : 26/09/2012

For, Janmitram Kalyan Samiti
Raigarh


(President)

For, Agrawal Dinesh & Co.
Chartered Accountants

(D.K. Agrawal)

Partner

Mem. No 076969





JANMITRAM KALYAN SAMITI
At/P.O.-RAIGARH, DISTT.-RAIGARH
FOR THE PERIOD FROM 1ST APRIL 2011 TO 31ST MARCH 2012

Bank Reconciliation

Bank Of Badodra

A/c No. 2917

Balance as per Cash Book as on 31st March,2012 1073168.00

Add:

Cheque issued but not presented in Bank

Name	Date	Ch.No.	Amount	
Delip Saxena	3/29/2012	100213	100000.00	
Girdhari lal Devedi	3/30/2012	178028	80000.00	
	3/31/2010		21000.00	
Less:				
Ispat Time	3/27/2012	52705	2000.00	199000.00

Balance as Per Bank Statement Pass Book at 31st March 2012 874168.00

In terms of our annexed report of even date

Place : Raigarh
Date : 26/09/2012

For, Janmitram Kalyan Samiti
At/ Po-Raigarh, Distt. Raigarh

(President)

For, Agrawal Dinesh & Co.
Chartered Accountants

(D.K. Agrawal)

Partner

Mem. No 076969

